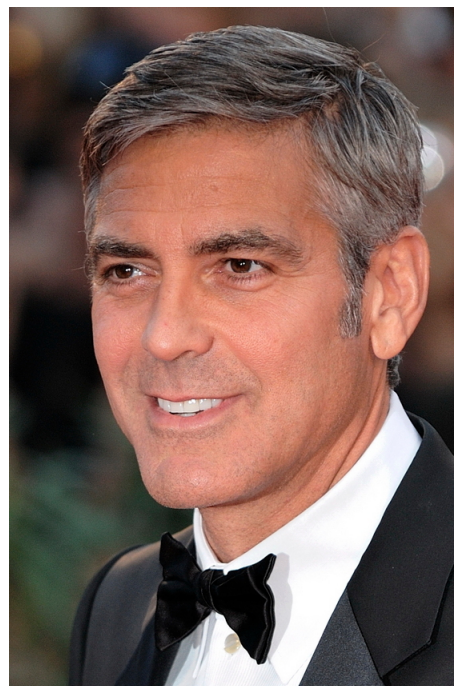


# Tune Your Ukulele (every time you play!)

This is George Clooney. He used to be wildly famous. People Magazine gave him an award for being dreamy in 1997 and then again in 2006. He's old now and he still looks better than everybody. He married a model and lives in Italy. But kids these days don't know him because he wears a suit of armor and sells Nespresso. I've decided I'm bringing George back. Help make him famous.



## George Clooney Eats Apples = GCEA

- or, Goats Can Eat Anything = GCEA
- For **BARITONE** ukuleles use DGBE
- Canadian tuning is **ADF#B** (just 'cuz)

Use a **top of the line clip-on tuner** or a **tuning app** on your phone. Check your tuning every time you play.



## How to use Relative Tuning ... buy a tuning fork tuned to A.

Check the open string #1, string #2 on the fifth fret, and string #4 on the second fret. Once those are set, double check every string as shown to see if they sound the same.

